

Waveguide Attenuators

Luso Electronics range of low power fixed and variable waveguide attenuators are available with attenuation values of up to 30dB as standard. The fixed attenuators incorporate a resistance card designed for optimum flatness and VSWR. The variable attenuators use a precision micrometer screw to drive the moving vane. Standard construction is copper waveguide with brass flanges. For custom design requirements, including other attenuator values, different flanges and special calibration requirements please contact the sales office.

Full band specifications

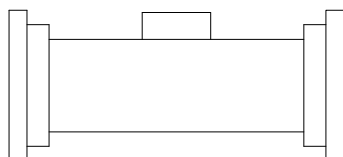
Attenuation Range 0 – 30dB
 Flatness ± 5% of attenuation
 VSWR 1.15:1 max.

Standard product table

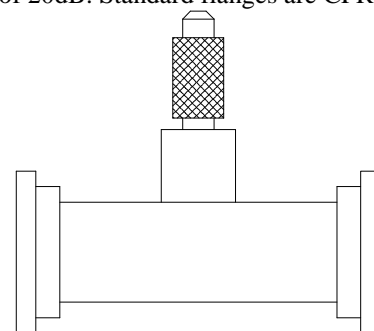
WAVEDUIDE SIZE		FREQUENCY RANGE (GHz)	STANDARD FLANGES	BASE MODEL No. (FIXED)	BASE MODEL No. (VARIABLE)	POWER MAX (W)
WR284	WG10	2.60 - 3.95	CPR284F	LU284FAT	LU284VAT	1.5
WR229	WG11A	3.30 - 4.90	CPR229F	LU229FAT	LU229VAT	1.5
WR187	WG12	3.95 - 5.85	CPR187F	LU187FAT	LU187VAT	1.5
WR159	WG13	4.90 - 7.05	CPR159F	LU159FAT	LU159VAT	1.5
WR137	WG14	5.85 - 8.20	CPR137F	LU137FAT	LU137VAT	1.5
WR112	WG15	7.05 - 10.00	UBR84	LU112FAT	LU112VAT	1.5
WR90	WG16	8.20 - 12.40	UBR100	LU90FAT	LU90VAT	1.0
WR75	WG17	10.00 - 15.00	UBR120	LU75FAT	LU75VAT	1.0
WR62	WG18	12.40 - 18.00	UBR140	LU62FAT	LU62VAT	1.0
WR51	WG19	15.00 - 22.00	UBR180	LU51FAT	LU51VAT	0.5
WR42	WG20	18.00 - 26.50	UBR220	LU42FAT	LU42VAT	0.5

Example: LU75VAT-30 is a WR75 variable attenuator with a maximum attenuation of 30dB. Standard flanges are UBR120. For other flange types, please specify on purchase order.

LU137FAT-20 is a WR137 fixed attenuator with a maximum attenuation of 20dB. Standard flanges are CPR137F.



FIXED ATTENUATOR



VARIABLE ATTENUATOR